

M O N D O T R A C K

OUTDOOR AND INDOOR HIGH PERFORMANCE TRACK

Mondo has been the official supplier of the last ten Olympic Games.

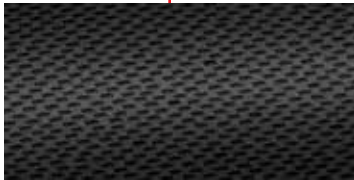
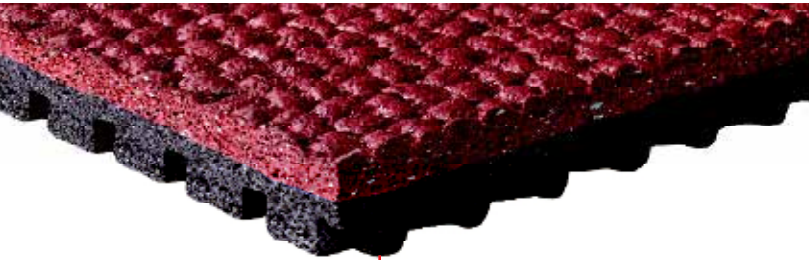
 **MONDO** TRACK&FIELD.

RUNNING ON INNOVATION



M O N D O T R A C K

OUTDOOR AND INDOOR HIGH PERFORMANCE TRACK



DEFORMING GEOMETRIES



During each step, the force gained and not dissipated transitions from the 5th metatarsus to the 1st metatarsus faster with Mondotrack than with existing track products. This helps support the effort of the lower leg muscles, increasing athletes' comfort and enabling runners to achieve faster times.

High performance prefabricated synthetic rubber track designed and manufactured for high level sport facilities. Three world records have been set on Mondotrack during the London 2012 Olympics.

TOP LAYER

- Surface embossing is designed to provide better traction and greater contact area
- Greater water flow efficiency in rainy conditions
- Harmonious aesthetic design

SHOCK ABSORPTION LAYER

- Hexagon Backing
- Better lateral support of the foot
- Higher energy return
- Optimal performance, control and comfort

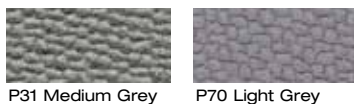
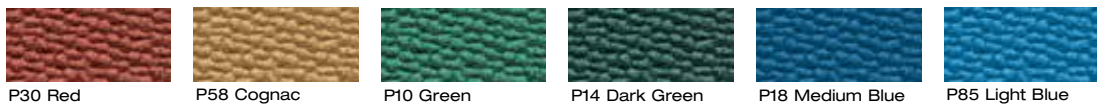
DURABILITY & PERFORMANCE

- Consistent thickness
- Easy to clean
- Unparalleled lifespan
- IAAF Certified

GREEN FACTS

- GREENGUARD Gold certified
- 100% recyclable and easy to dispose of because it is free of halogen, CFCs, plasticizers, chlorine, heavy metals and asbestos
- Contributes toward the efforts to achieve LEED points

INDOOR & OUTDOOR COLORS



INDOOR ONLY



Texture: Mondotrack embossing

— I 35/64" (13.5 mm) | — 3' to 6' (0.92 to 1.83 m) | — 19'8" to 52'9" (6 to 16 m)

— 2.54 lbs./sq. ft. (12.4 kg/m²)

Custom colors available on order. Minimum quantity required.

WWW.MONDOTRACKUSA.COM

8 0 0 3 6 1 3 7 4 7

mondo@mondousa.com