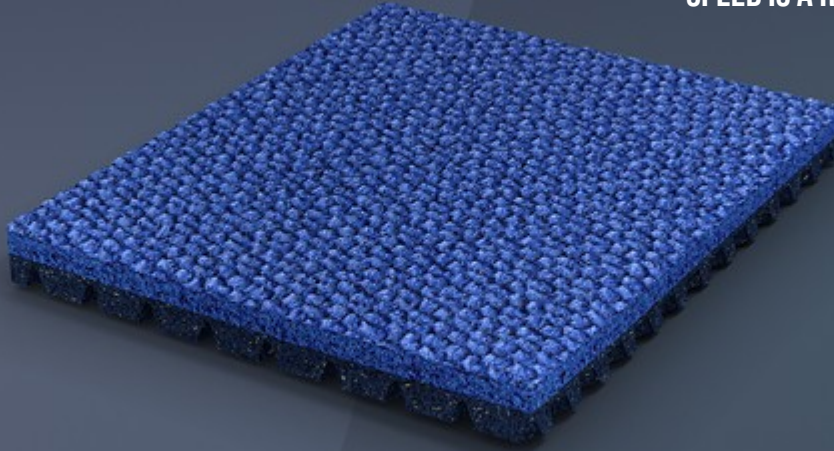


MONDOTRACK WS

SPEED IS A RELATIVE CONCEPT. VICTORY IS NOT.



DESIGNED WITH THE GOAL OF TAKING HUMAN SPEEDS TO LEVELS NEVER REACHED BEFORE, MONDOTRACK WS IS THE MOST TECHNOLOGICALLY ADVANCED RUNNING TRACK IN THE WORLD.



EMBOSSED SOLID-RUBBER TOP LAYER

Vulcanized rubber surface layer with raised embossing for optimal elasticity and grip, and efficient drainage.



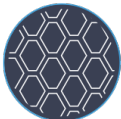
CO-VULCANIZED MULTI-LAYER DUAL DUROMETER

Two different layers of solid rubber with their own formulations, vulcanized together to form a continuous, seamless piece of material.



AIR-CELL TECHNOLOGY

Air-filled chambers on the bottom layer compress, then expand, acting like bowstrings and projecting athletes up and forward.



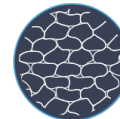
ELONGATED HONEYCOMB BACKING

Hexagonal air-filled chambers surrounded by ribs that deform in three dimensions on the track underlayment minimize the time the athlete is in contact with the flooring, maximize energy return, and optimize the floor's reaction time.



2-PHASE VULCANIZATION

The vulcanized top layer integrates a three-dimensional network of pre-vulcanized rubber granules to optimize the elastic response of the entire surface.



NON-DIRECTIONAL TESSELLATION

Surface embossing that enhances slip resistance and traction reduces the need for shoe spikes to penetrate the surface to grip the track, enabling athletes to run faster because their feet spend less time in contact with the track.



MONDOTRACK WS

A constant push toward the finish line to pass opponents and achieve personal bests: That's what athletics is about. To provide athletes with the surface they need to reach their full potential, MONDO used the latest technology to create the perfect track. Designed for optimal athletic performance and chosen as the official track of the 2016 Olympic Games in Rio, Mondotrack WS is the ultimate running track

MAXIMUM ELASTICITY AND UNIFORM RESPONSE.

The 2-Phase Vulcanization™ process incorporates a three-dimensional net of pre-vulcanized granules with a controlled composition and elasticity in the surface layer of the Mondotrack WS. This significantly increases the surface's elasticity and guarantees a uniform dynamic response across the entire track. As a result, the need for athletes to adjust their posture while running is minimized which reduces fatigue. In addition, it helps runners to easily achieve top performance by facilitating better control over stride length and movements.

GRIP UNDER ALL CONDITIONS

The surface layer's patented texture, called Non-Directional Tessellation™, improves surface drainage by 20% and increases adherence in the rain and for water jumps. It also improves slip resistance and traction so that runners' spikes do not need to penetrate the track surface for grip in damp conditions.

OPTIMIZED ENERGY RESPONSE

Mondotrack WS's backing features patented Elongated Honeycomb Backing technology. The lower layer is composed of an elongated diamond-shaped geometric structure that can be deformed in three dimensions to provide a perfect combination of shock absorption, energy storage and energy return, facilitating the foot's natural roll. When the athlete's foot hits the surface, the air cells are compressed, absorbing the impact and converting the stored energy into the maximum amount of kinetic energy. This way, impact and vibration are minimized, movement is more efficient and the energy yield is maximized. This significantly improves athletic performance.

DIMENSIONS

THICKNESS

13,5 mm

WEIGHT

12,6 kg/m²

LENGTH

6÷15 m

HEIGHT

122÷160 cm

I / VERSION

THICKNESS

13,5 mm

WEIGHT

12,6 kg/m²

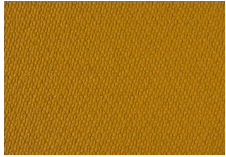
LENGTH

6÷15 m

HEIGHT

122÷160 cm

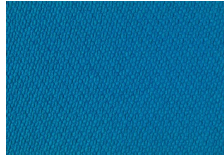
COLOR RANGE



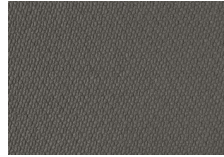
P58



P18



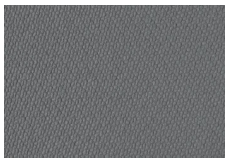
P85



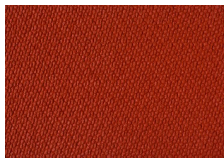
P31



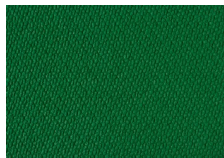
P14



P70



P30



P10

CERTIFICATIONS

Mondotrack WS 13.5mm IAAF Product Certificate

Mondotrack WS I Greenguard Certification

Mondotrack WS I Greenguard Gold Certification

Mondotrack WS Greenguard Certification

Mondotrack WS Greenguard Gold Certification
