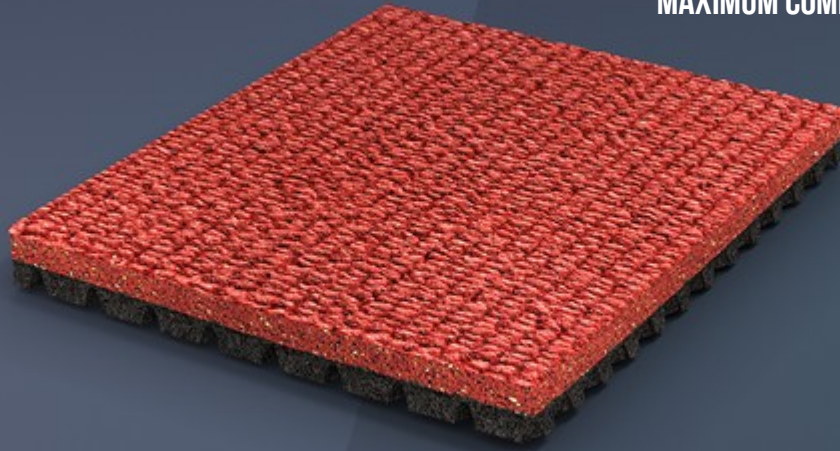


# SPORTFLEX SUPER X 720

MAXIMUM COMFORT AND OPTIMAL PERFORMANCE.



WE PAIRED MONDOTRACK'S BOTTOM LAYER AND THE TRADITIONAL SPORTFLEX SURFACE TO CREATE SPORTFLEX SUPER X 720, THE PERFECT COMBINATION OF COMFORT AND PERFORMANCE.



#### EMBOSSED SOLID-RUBBER TOP LAYER

Vulcanized rubber surface layer with raised embossing for optimal elasticity and grip, and efficient drainage.



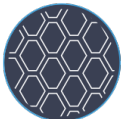
#### CO-VULCANIZED MULTI-LAYER DUAL DUROMETER

Two different layers of solid rubber with their own formulations, vulcanized together to form a continuous, seamless piece of material.



#### AIR-CELL TECHNOLOGY

Air-filled chambers on the bottom layer compress, then expand, acting like bowstrings and projecting athletes up and forward.



#### ELONGATED HONEYCOMB BACKING

Hexagonal air-filled chambers surrounded by ribs that deform in three dimensions on the track underlayment minimize the time the athlete is in contact with the flooring, maximize energy return, and optimize the floor's reaction time.

## SPORTFLEX SUPER X 720

Sportflex Super X 720 provides uniform dynamic response across the entire track, to guarantee optimal pacing.

For everything from daily training to the toughest competitions, Sportflex Super X 720 is the perfect combination of energy return, comfort and safety.

## A WINNING TRADITION

The top layer is composed of MONDO's classic directional texture in rubber. Not only does this technology provide excellent grip, but it stands out for its durability and exceptional drainage in wet conditions.

## A TOP-NOTCH LOWER LAYER

The backing features Elongated Honeycomb technology to facilitate the foot's roll. Hexagonal air cells deliver exceptional shock absorption with energy storage and return in the form of a kinetic thrust.

## RESPECT FOR PERFORMANCE AND THE ENVIRONMENT

Sportflex Super X 720 is one of the finest examples of MONDO's commitment to environmental sustainability. The track contains up to 42% recycled post-consumer and post-industrial material and 6% rapidly renewable materials.

## DIMENSIONS

### THICKNESS

13,5 mm

### WEIGHT

12.0 kg/m<sup>2</sup>

### LENGTH

6÷15 m

### HEIGHT

122÷160 cm

## I / VERSION

### THICKNESS

13,5 mm

### WEIGHT

12.0 kg/m<sup>2</sup>

### LENGTH

6÷15 m

### HEIGHT

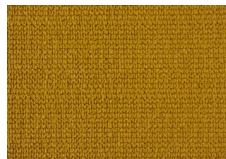
122÷160 cm

## COLOR RANGE

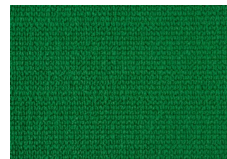
### INDOOR&OUTDOOR



P30



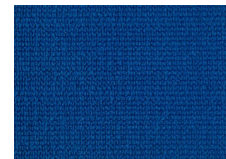
P58



P10



P14



P18



P70



P85



P31

## CERTIFICATIONS

**Sportflex Super X 720 13.5mm IAAF Product Certificate**

---

**Super X 720 Greenguard Certification**

---

**Super X 720 Greenguard Gold Certification**

---

**Super X 720 I Greenguard Certification**

---

**Super X 720 I Greenguard Gold Certification**

---